

POMPANO BEACH MARINA
701 SOUTH FEDERAL HIGHWAY
POMPANO BEACH, FLORIDA 33062

Sheet Description
IRRIGATION PLAN

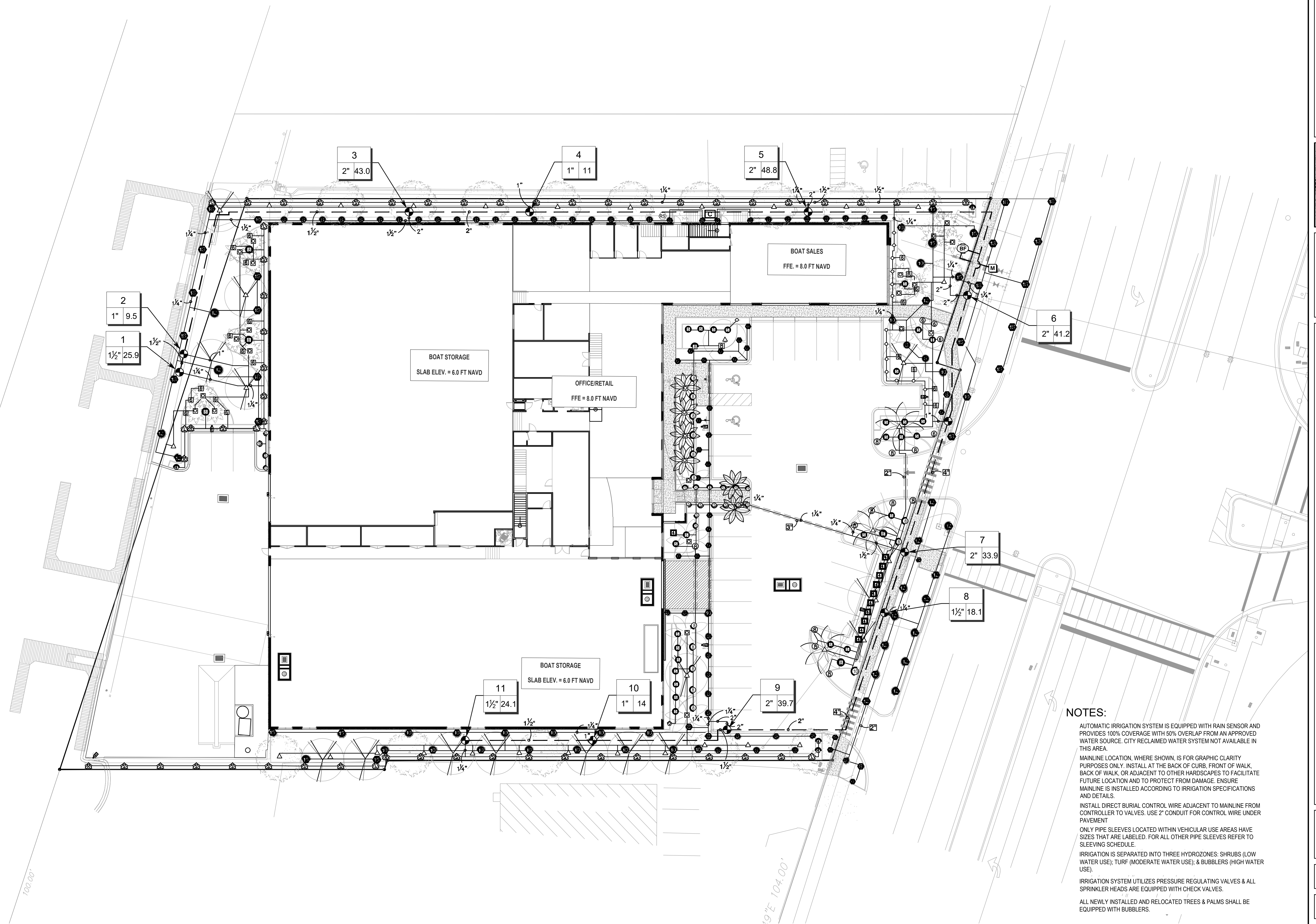
Release Date
6-27-2025

Project Number
2453

Drawing Number

-300

Sheet 1 OF 3



NOTES:

AUTOMATIC IRRIGATION SYSTEM IS EQUIPPED WITH RAIN SENSOR AND PROVIDES 100% COVERAGE WITH 50% OVERLAP FROM AN APPROVED WATER SOURCE. CITY RECLAIMED WATER SYSTEM NOT AVAILABLE IN THIS AREA.

MAINLINE LOCATION, WHERE SHOWN, IS FOR GRAPHIC CLARITY PURPOSES ONLY. INSTALL AT THE BACK OF CURB, FRONT OF WALK, BACK OF WALK, OR ADJACENT TO OTHER HARDSCAPES TO FACILITATE FUTURE LOCATION AND TO PROTECT FROM DAMAGE. ENSURE MAINLINE IS INSTALLED ACCORDING TO IRRIGATION SPECIFICATIONS AND DETAILS.

INSTALL DIRECT BURIAL CONTROL WIRE ADJACENT TO MAINLINE FROM CONTROLLER TO VALVES. USE 2" CONDUIT FOR CONTROL WIRE UNDER PAVEMENT

ONLY PIPE SLEEVES LOCATED WITHIN VEHICULAR USE AREAS HAVE SIZES THAT ARE LABELED. FOR ALL OTHER PIPE SLEEVES REFER TO SLEEVING SCHEDULE.

IRRIGATION IS SEPARATED INTO THREE HYDROZONES: SHRUBS (LOW WATER USE); TURF (MODERATE WATER USE); & BUBBLERS (HIGH WATER USE).

IRRIGATION SYSTEM UTILIZES PRESSURE REGULATING VALVES & ALL
SPRINKLER HEADS ARE EQUIPPED WITH CHECK VALVES.

ALL NEWLY INSTALLED AND RELOCATED TREES & PALMS SHALL BE
EQUIPPED WITH BUBBLERS.

SCALE: 1" = 20'-00"

